

MODULE 11 L02

Male Reproductive System: Tracts

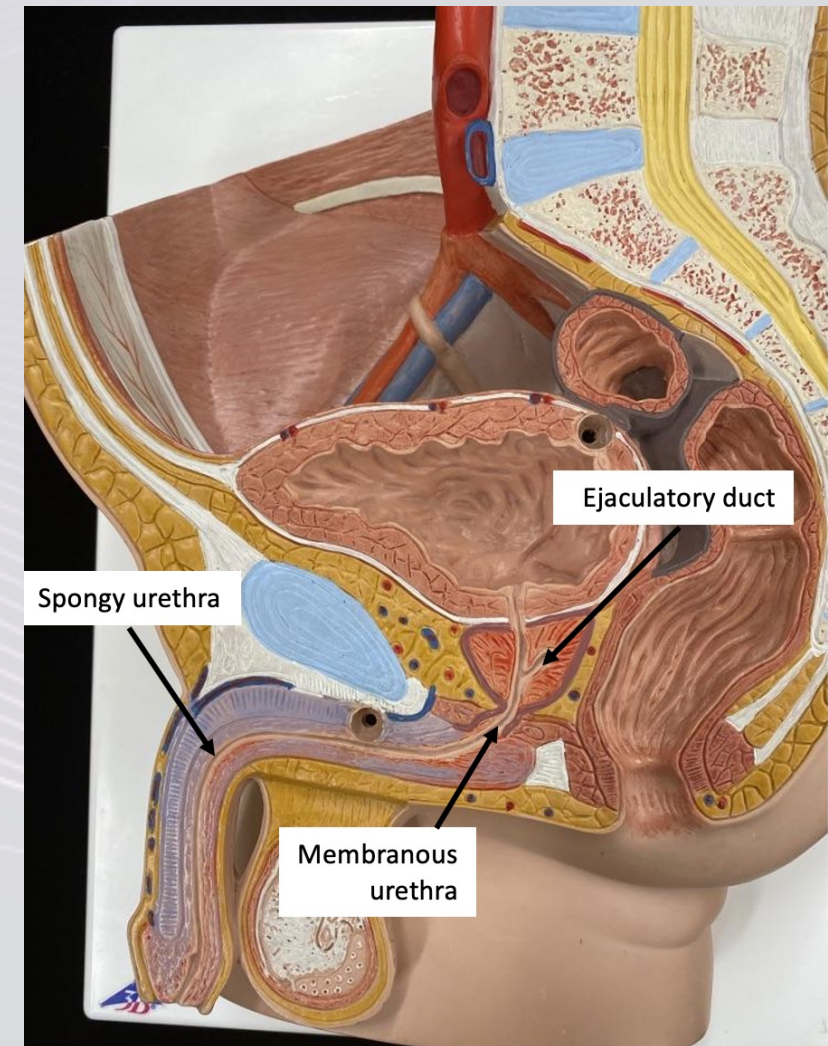
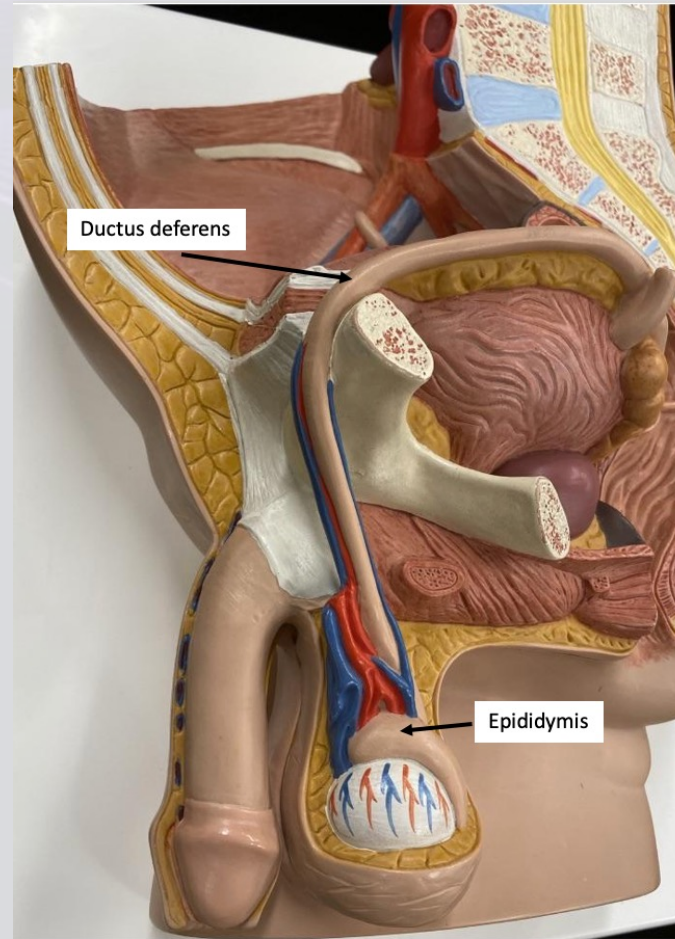
Dr. Lisa Brinn

lbrinn@fiu.edu



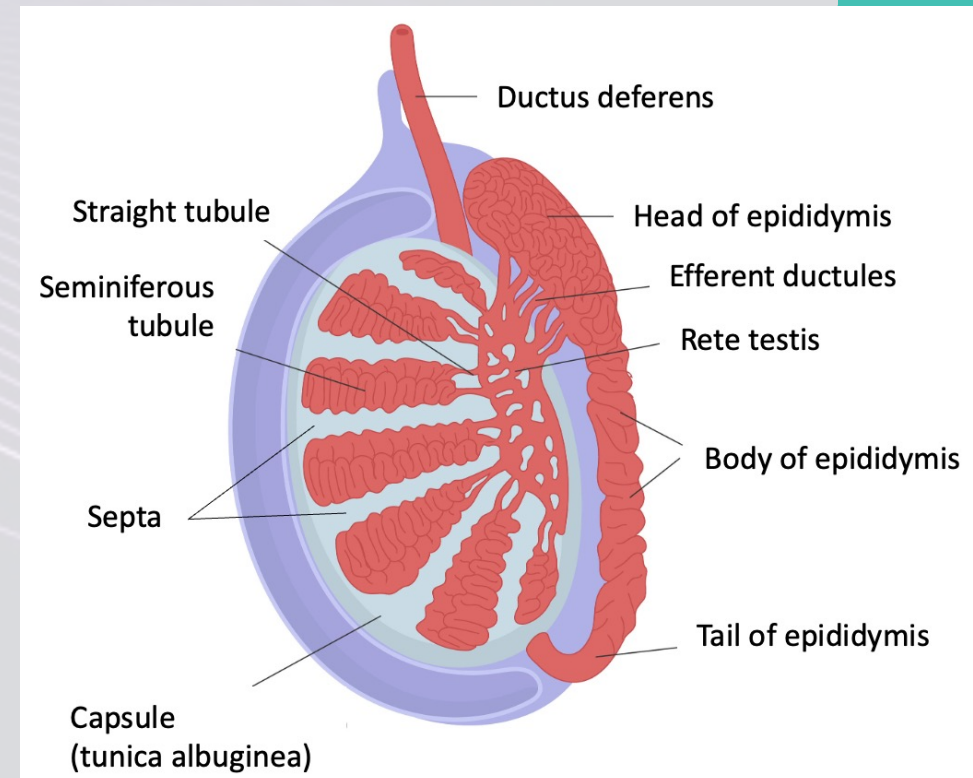
Male Reproductive Tract

- Epididymis
- Ductus deferens
- Ejaculatory duct
- Urethra



Epididymis Structures

- Spermatozoa functionally immature in seminiferous tubule
- Parts of the epididymis
 - ❖ Head
 - Receives spermatozoa via efferent ductules
 - Lined with pseudostratified columnar epithelium with long stereocilia
 - ❖ Body
 - Lined with pseudostratified columnar epithelium with long stereocilia
 - ❖ Tail
 - Decrease in convolutions
 - Reverses direction
 - Stereocilia disappear
 - Continuous with ductus deferens
 - Sperm storage

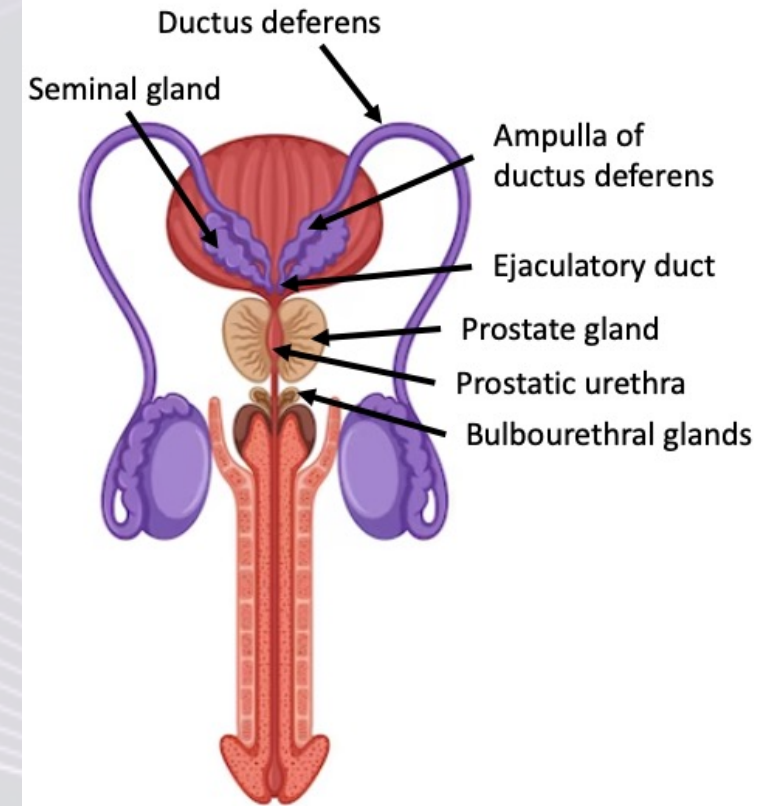
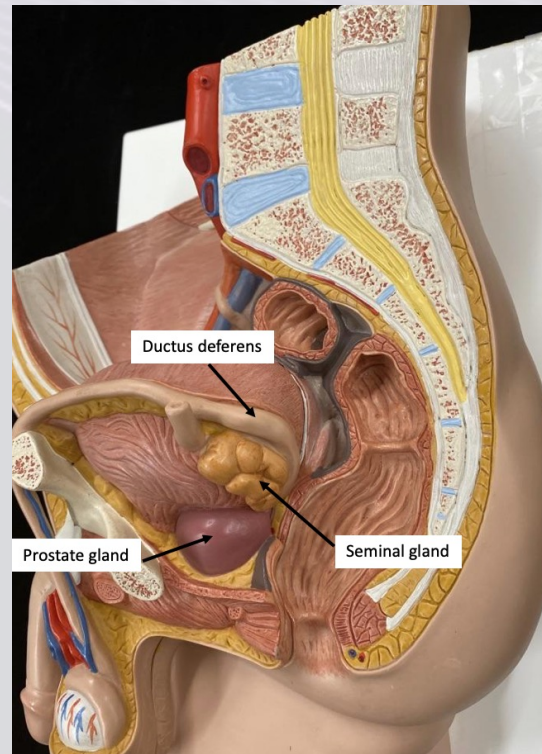


Epididymis Functions

- Monitors and adjusts composition of fluid produced by seminiferous tubules
- Acts as a recycling center for damaged spermatozoa
- Stores spermatozoa and facilitates their functional maturation
 - ❖ → capacitation
 1. Motile → mixing with seminal gland secretions
 2. Fertilization → changes in permeability of sperm plasmalemma in female reproductive tract

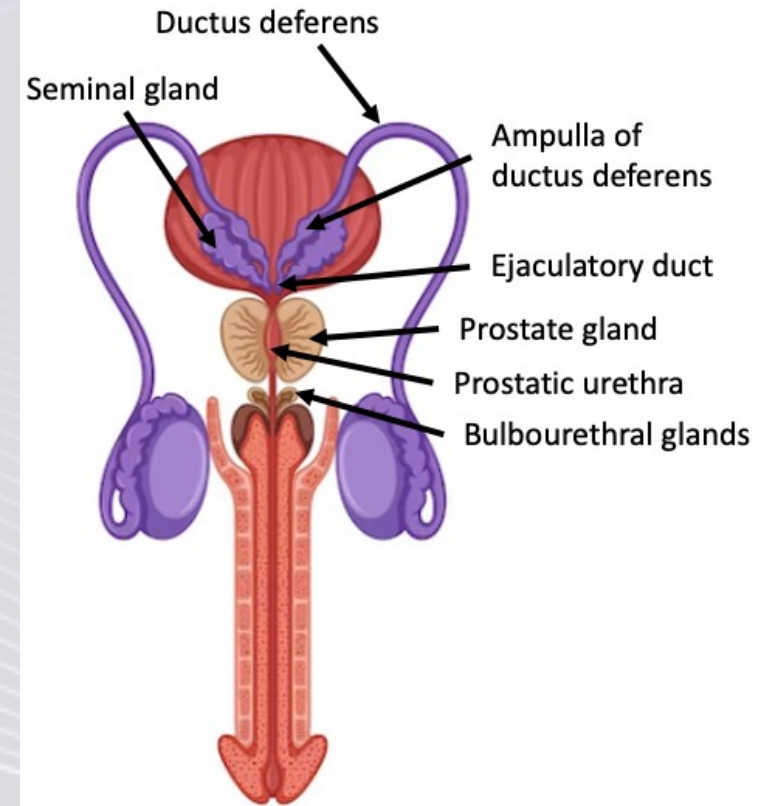
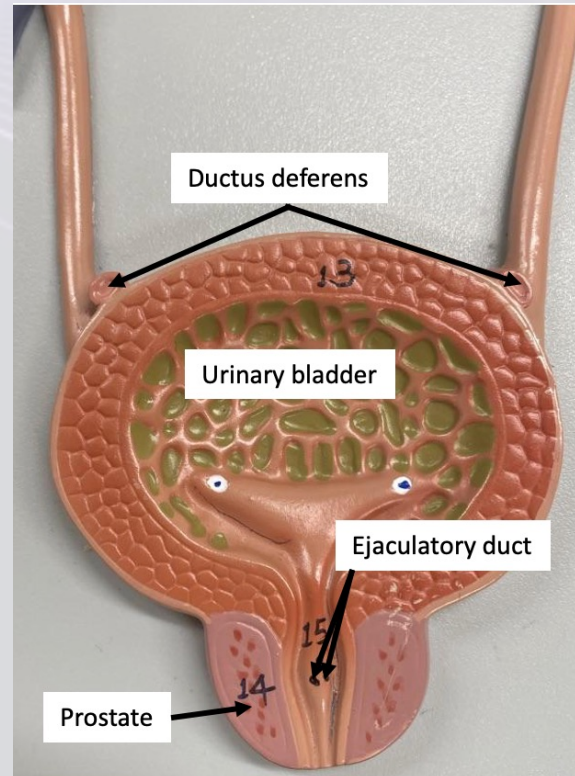
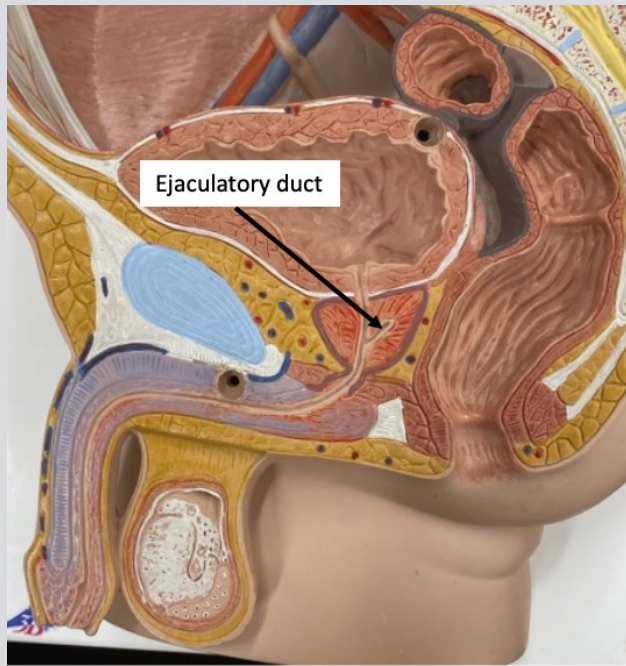
Ductus Deferens

- Begins at end of epididymis tail
- Ascends into abdominopelvic cavity
 - ❖ Through inguinal canal
- Ampulla – located posteriorly, superior to prostate



Ejaculatory Duct

- ❖ Ends in prostate
- ❖ Formed by fusion of seminal gland duct and ampulla of ductus deferens



Urethra

- Prostatic urethra
 - ❖ Through prostate
- Membranous urethra
 - ❖ Through urogenital diaphragm
- Spongy urethra
 - ❖ Through corpus spongiosum

